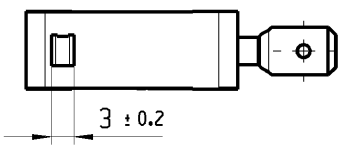
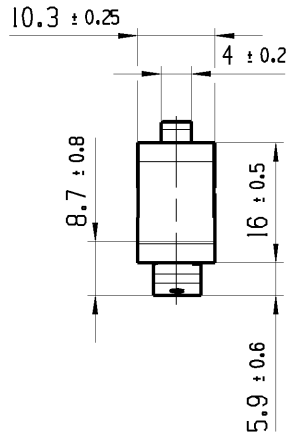
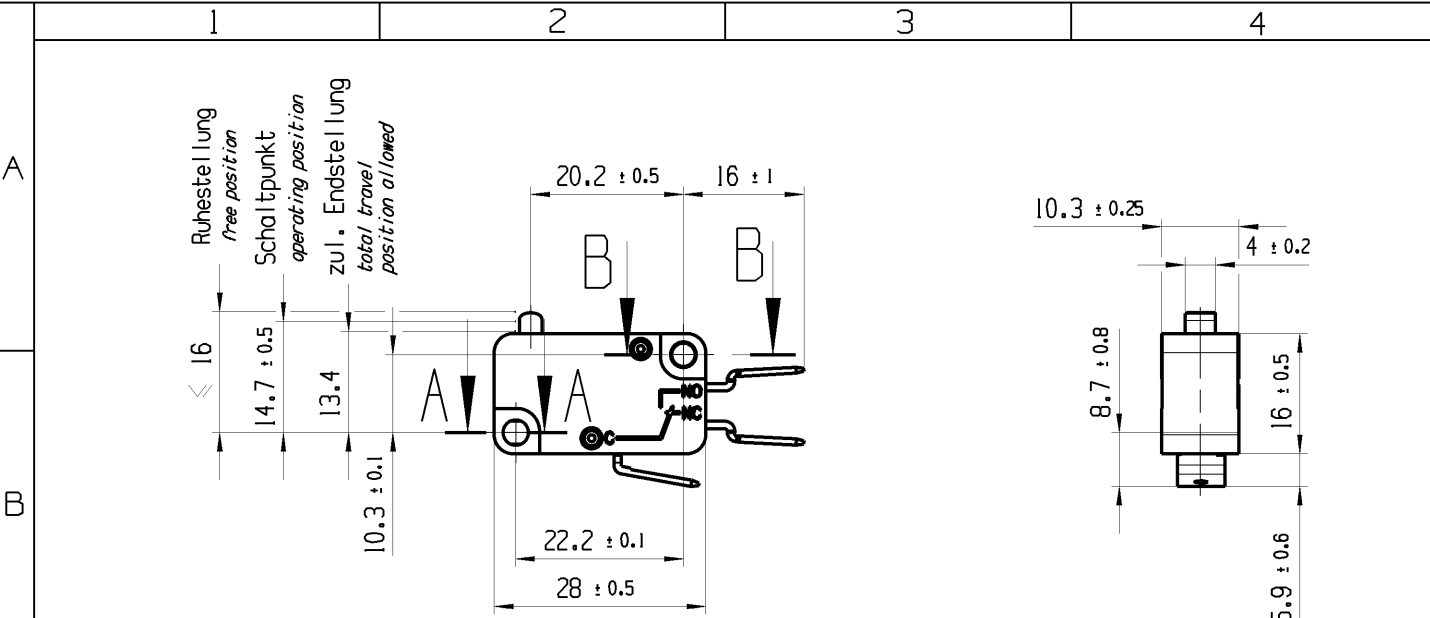


THIS DRAWING IS THE EXCLUSIVE PROPERTY OF MARQUARDT. WITHOUT THEIR CONSENT IT MAY NOT BE REPRODUCED OR GIVEN TO THIRD PARTIES.

CONFIDENTIAL

VERTRAULICH

Alle Rechte bei Marquardt, auch fuer den Fall von Schutzrechtsanmeldungen. Jede Verfertigungsbefugnis, wie Kopier- und Weitergaberecht, bei uns.



Flachstecker 6.3 x 0.8  
EN 61058 / EN 61210 / DIN 46244  
blade terminal 6.3 x 0.8  
EN 61058 / 61210 / DIN 46244

A-A  
2:1

B-B  
2:1

Aufschrift  
marking

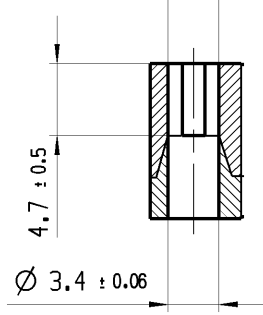
1005 μ T100  
20(4)/400 ~ 10E3  
16(4)/400 ~ 50E3  
10(6)/250 ~ 50E3

16A 125V AC 1/2HP  
16A 250V AC 1/2HP

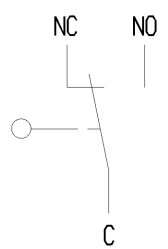
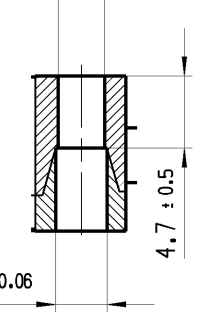
R109

Herstellort / -jahr / -woche  
date code of manufacture:  
place / year / week

3.35 ± 0.05 x 3.08 ± 0.06



Ø 3.08 ± 0.06



Wechsler 1-polig  
single pole changeover

Schalt-Betaetigungskraft 2.4 bis 3.8 N  
actuating force 2.4 up to 3.8 N

Differenzweg ≤ 0.3 mm  
movement differential

General tolerances				Sheet 01			Ident.	Document number	Index
All dimensions are in millimetres	Shape and location ⊙ ≡	Angle ± 2°	Edge tolerance 	0-6	± 0.1	± 0.2	K	10051004	d
				>6-15	± 0.15	± 0.3			
				>15-30	± 0.2	± 0.5			
				>30-70	± 0.3	± 10%			
				>70-120	± 0.4				
>120	± 0.8								
d	109072	2017-08-16	TRIGUIK			snap action switch			
c	83050	2014-06-13	BRC						
b	28825	1999-12-08	PFU						
a	20923	1991-06-14	WA						
Index	ECN-No.	Date (YYYY-MM-DD)	Edited by						
				Format DIN A4			Projection	Scale 1:1	
				System NX V10.0			 MARQUARDT		
				Replacement of Zg.l.Nr.v.08.12.1999					